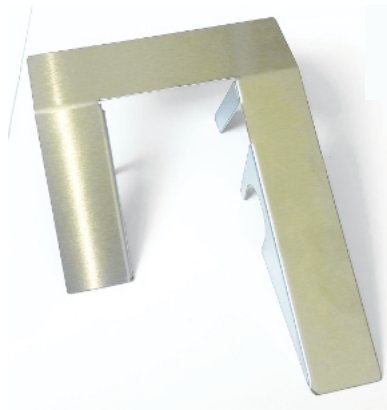


# STAINLESS STEEL ENRICHMENT FOR RODENTS

---

Our stainless steel enrichment is ideally suited for scientific animal housing. This sustainable alternative is readily accepted by the animals. Cleaning, washing and sterilisation processes have almost no impact on product life. A clean, sustainable alternative to our plastic enrichment range.



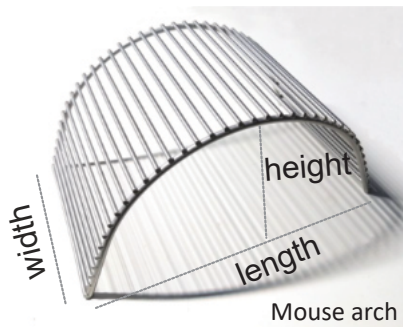


# STAINLESS STEEL – ENRICHMENT

## FOR RODENTS

### MOUSE AND RAT ARCHES

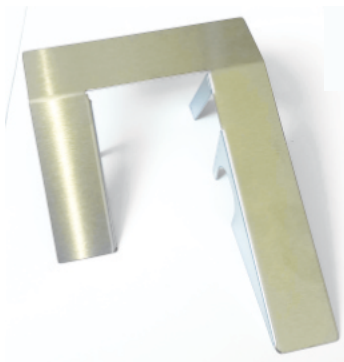
stainless steel AISI 304



Mouse arches reduce aggression between animals and allow them to exercise their need to climb. The round shape of the arches has been proven in scientific studies and is readily accepted by the animals. Natural behaviour is encouraged.

Type	Dimensions (L x W x H) in mm	Order no.
small	~ 150 x 90 x 70	5083804
large	~ 180 x 125 x 90	5083805

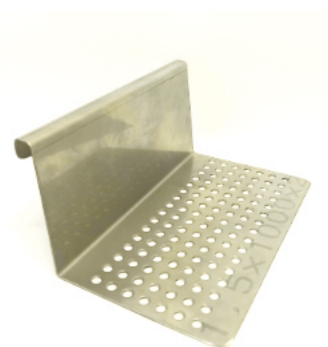
### MOUSE RAMP



The stainless steel mouse ramp can be inserted into cages as an enrichment. The ramp can ensure accessibility to food and water for animals. Additionally, it serves as a basement enrichment that encourages exploration.

Type	Order no.
For cages Type 2 L	5084130

### RAISED LYING SURFACE - to be hung on the cage wall



Raised lying surface, perforated, for rats

The raised resting area is designed to be attached to the long side of the cage. A second level can help reduce stress.

Dimensions (L x W x H) mm	For cage type	Order no. <sup>044</sup>
165 x 100 x 80	3	5063279
165 x 90 x 120	3 H	5063280
165 x 90 x 90	4	5063284

# STAINLESS STEEL – ENRICHMENT

## FOR RODENTS

### MOUSE-CLIMBER



Mouse Climber is easy to fix on the lid of the cage and creates another climbing possibility for the animals. This makes it easier for the animals to reach otherwise inaccessible places.

Type	Dimensions (L x W x H) in mm	Order no.
Mouse-Climber	142 x 70	5063299

### MOUSE-SWING



Mouse Swing design  
of Size 2 and 3

Our stainless steel mouse swing can be attached to the grid as an additional enrichment. These swings are readily accepted by the animals and extend the animals' climbing area.

Type	Order no.
Size 1 / 52 x 95 mm	4133001
Size 2 / 52 x 95 mm	4133002
Size 3 / 92 x 105 mm	4133003

depicted: Size 3



Size 3

Size 2

Size 1