

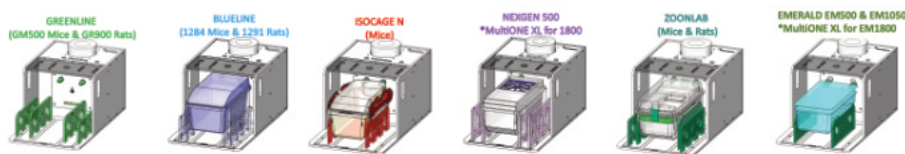
# ZL MULTIONE 2.0

## AIR FLOW SYSTEMS

The ZL MultiOne 2.0 is an advanced device for CO<sub>2</sub> fumigation of IVC cages in the workplace.

Due to the innovative design, both type 2 L and type 3 cages can be connected. The ZL MultiOne recognizes the cage and automatically starts a gassing process after docking. The automatic flow adjustment ensures that only the required amount of CO<sub>2</sub> enters the cage. Depending on the model, a session takes between 6 and 8 minutes.

The ZL MultiOne is designed for ZOONLAB cages. However, cages from other manufacturers can also be used when equipped with special adapters. Thus, we guarantee compatibility of cages of the Green and BlueLine Tecniplast series as well as cages of the NextGen series of the manufacturer Allentown.



A simple LED display on the unit visualizes the three different operating modes "Session Ready", "In Progress" and "Completed." The ZL MultiOne can be operated with a portable CO<sub>2</sub> cylinder as well as on the mains at 2 bar pressure.

The MultiOne XL has been designed for large double-decker rat cages. Please feel free to contact us for more information.



### Technical Details:

- Adapter for cages type 2 L and type 3
- Auto-start function by recognition of the cages upon docking
- Automatic sequence with induction phase, euthanasia phase and flushing phase
- Session duration: 8 minutes for cage type 2 L, 10 minutes for type 3
- LED indicators for "session ready", "in progress" or "completed"
- Connection for CO<sub>2</sub> bottle or mains 2 bar pressure
- With active CO<sub>2</sub>-filtration
- Soda lime filter and/or external exhaust port
- Air purifier to purge the CO<sub>2</sub> from the cage at the end of the session
- External power supply: 220 V to 24 V – European standard
- For a mobile solution, ZOONLAB offers a matching mobile stand.

Description	Cages	Order No.
<b>Model MultiOne 2.0</b> Outer dimension (W x D x H) 465 x 683 x 360 mm	Type 2 L / 3	53144415
	Please let us know which cages you will be using. The appropriate docking plugs are supplied with the device.	
<b>Model MultiOne 2.0 triplex</b> Outer dimension (W x D x H) 435 x 800 x 1500 mm	Type 2 L / 3	53144417
	3 x MultiOne 2.0 combined into a space-saving tower. For more intensive use of the MultiOne 2.0	
<b>Accessories</b>		
Soda lime cylinder		3144420



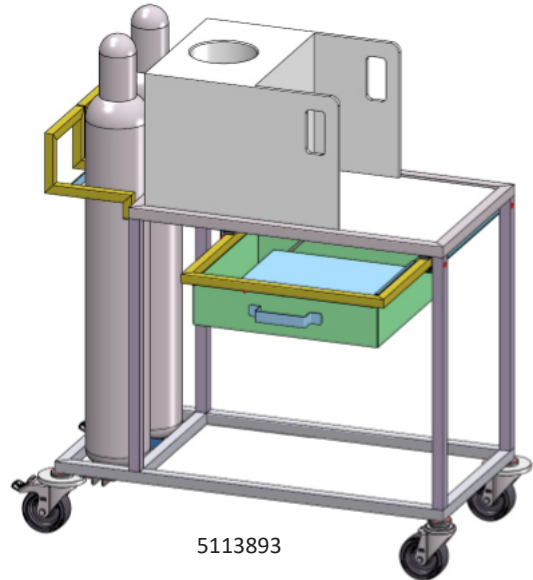
# ZL MULTIONE SERVICE TROLLEY

## FOR AIR FLOW SYSTEMS

The ZL MultiOne service trolley is specially designed for the safe transport of gas cylinders. This means you can easily move the MultiOne to different locations.

### Your benefits at a glance:

- The legal requirements for the stability and transport safety of gas cylinders are thus always complied with
- The additional drawer gives the user hands-free access to essential items such as documents and other items in the minimum amount of space.
- Even a fold-out table is always on the move, thanks to the integrated "tablet" in the drawer.
- The drawer can also be opened on both sides. This means that the additional table surface can also be folded out on both sides.



The MultiOne trolley is the ideal complement to MultiOne, making it suitable for mobile use with maximum freedom in any space.

Beschreibung	Käfigschalen	Bestell-Nr.
Transport trolley with drawer and tablet holder	1010 x 510 x 1080 [L x W x H] in mm	5113893



Subject to technical modifications.