

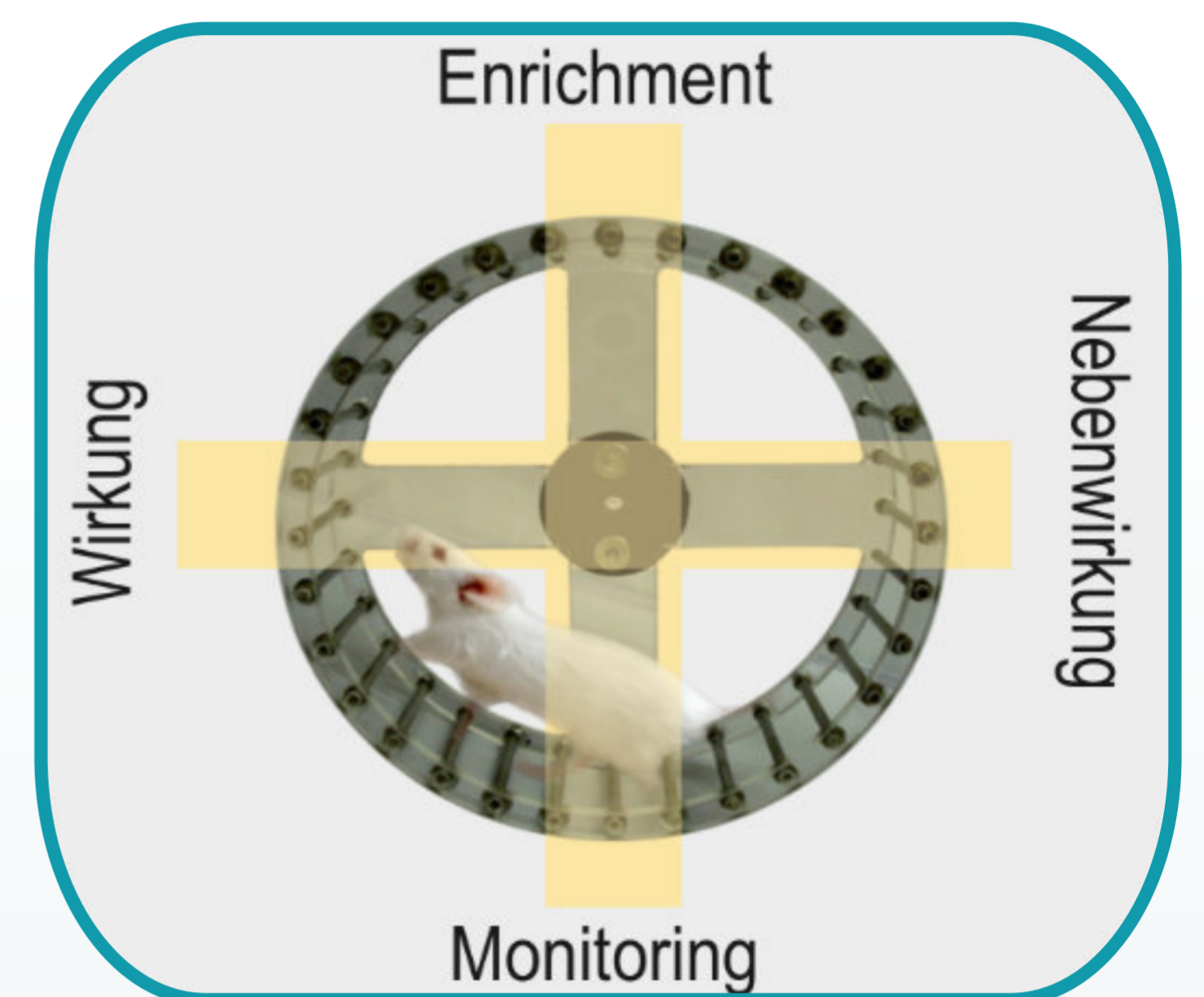
# REVOLYZER - Voluntary running assay

## How voluntary running assays support animal welfare and accelerate research

### Measurement of voluntary running activity

The voluntary running activity of mice is a sensitive parameter for the assessment of the general condition.

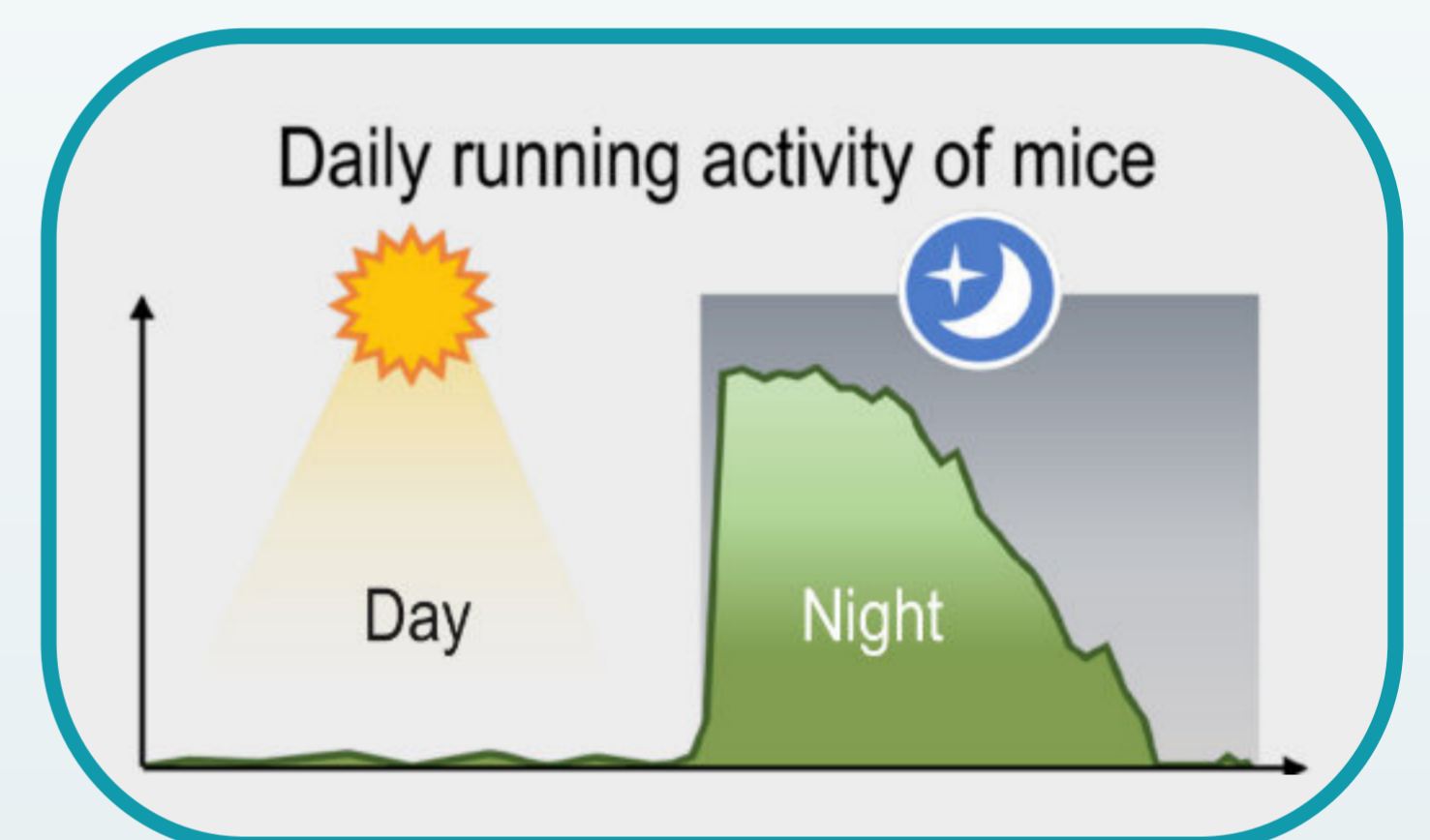
Mice are highly motivated to use a running wheel. This motivation can be utilized for the objective detection of discomfort and stress. It allows the quantification of impairment without additional examinations.



### What are your mice doing at night?

By evaluating the voluntary running activity you will find out!

The running activity is triggered by the dark phase. The high activity during the dark phase allows to monitor the mice without entering the animal husbandry. You can analyze the condition of the mice either online or the next day.

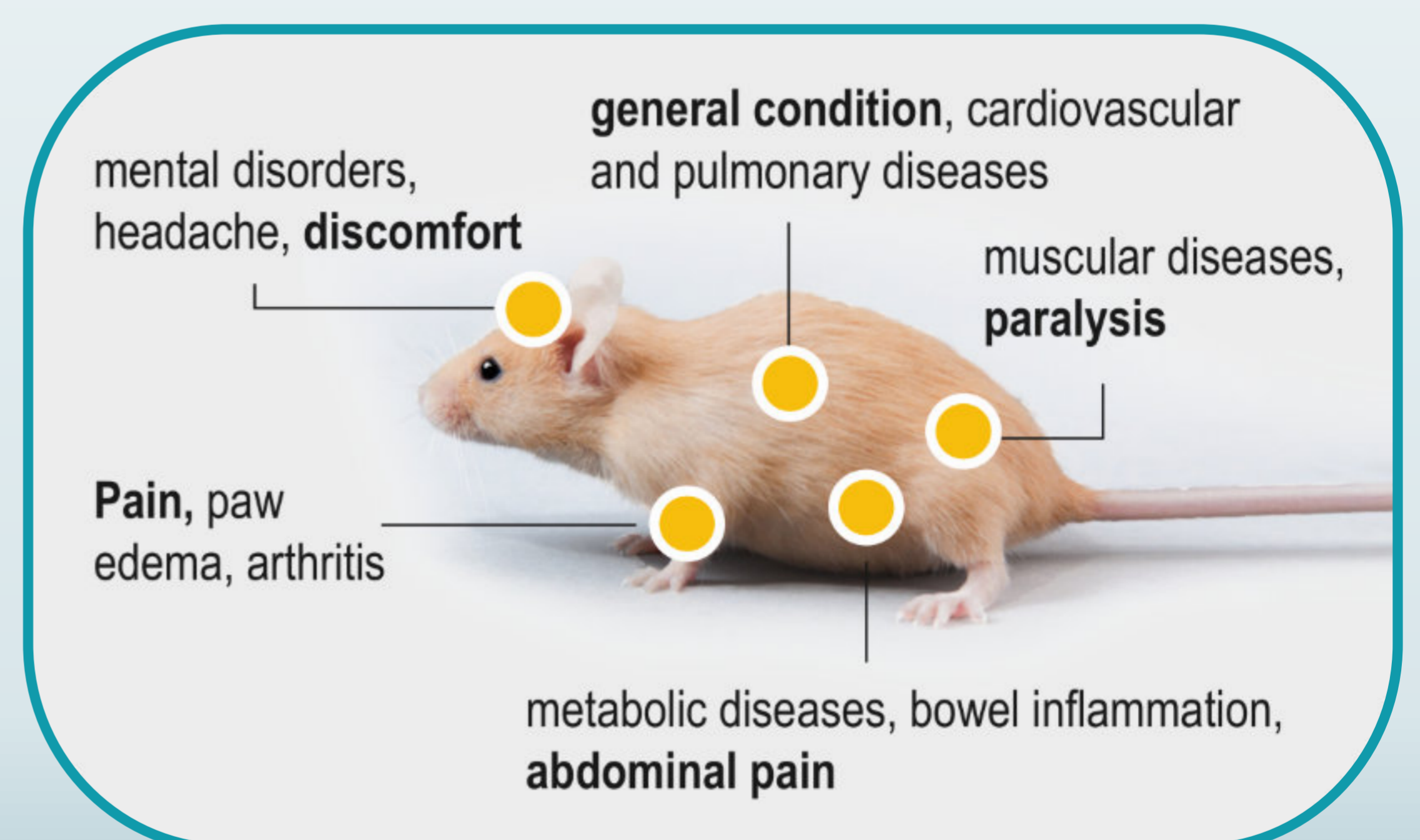


### A valuable enrichment

In normal cages mice are activity deprived. Using a running wheel mice can exercise at their normal activity level.

The diverse parameters influencing running activity are helpful of pharmacology and toxicology experiments, because alterations give an objective information about efficacy and side effects.

The measurement of running activity is a noninvasive examination and enrichment at the same time. Instead of additional burden the animals benefit from the voluntary running assay.



preclinics

ZOONLAB GmbH  
Hermannstraße 6  
44579 Castrop-Rauxel  
Deutschland

[ZOONLAB]  
ANIMAL HUSBANDRY EXPERTS

T: +49 (0) 23 05-9 73 04 - 0  
F: +49 (0) 23 05-9 73 04 - 44  
E: info@zoonlab.de  
www.zoonlab.de