

FEEDME

FeedMe revolutionises your pet feeding!

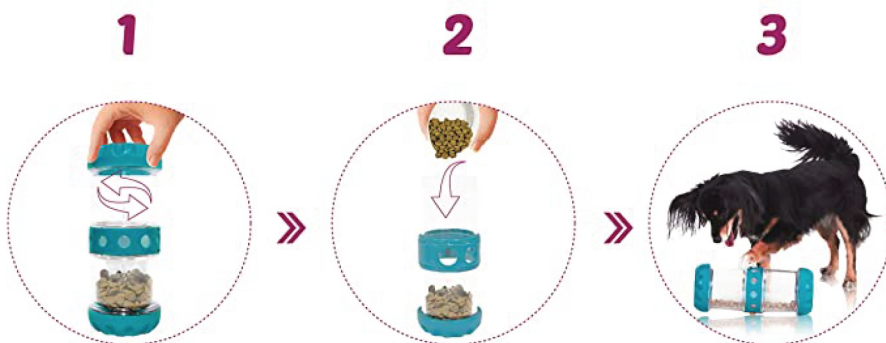
Originally developed by animal behaviour experts for cats and dogs, FeedMe works as both an activity and feed utensil.

FeedMe is the only device that prevents gobbling a meal from bowls and can playfully extend food consumption to an average time of 55 minutes. Stress is reduced and the animal's activity is encouraged.

FeedMe is also suitable for ferrets, rabbits, pigs (up to 350 kg) and monkeys. In order to meet different animal requirements, an additional separate housing device has been developed for FeedMe, which can be attached to enclosure walls.

FeedMe can house food from 5 - 30 mm pellet size. The central opening ring is used to adjust the device to the correct pellet feed size. Due to the conical design, the feed is always directed to the middle ring with the feed opening, ensuring a steady feed delivery per rotation.

FeedMe is ideally suited for scientific animal husbandry due to its autoclavability up to 134°C.



1 Open the cover

2 Pour the dog food into the device.

3 **Your Done!** Your FeedMe is ready for use

Turn the cover to close position – wait for the last click!

Adjust the hole to the required size.

